

# ***SSuite Excalibur Release***

## ***A Full Featured Office Suite...***



### Introduction...

This office suite introduces some new innovative concepts in interface design and user-friendly application interaction. You get instant system access, top class application design and a cleaner desktop to name a few. You also don't even have a need for .NET or even JAVA to be installed. This will save you a lot of hard drive space and precious computer resources.

The tabbed document interfaces also make it easier to find your opened documents with a single view. The thumbnail previews enhances the user-interaction further by displaying the whole document layout, whether you are creating pdf's, image documents, or simply displaying the print preview as you create your important document, thesis, letter, or birthday card.

This whole office suite is only 25 MB in download size. After installation, it takes up 129MB of space on your local storage device. No other office suite can match our efficiency and small digital footprint... 🤖

**There is No Java or DotNet required to run our software...** 🎉

***This is version v4.40.14.4 - Our Best Release Ever!***

<https://www.ssuiteoffice.com/software/ssuiteexcalibur.htm>

With us you get it all for free!

So please enjoy our premium office suite you have just installed...

\*\*\*\*\*



## ***NEW ONLINE EXCALIBUR RELEASE!***

<https://desktop.ssuiteoffice.com/>

\*\*\*\*\*



*Donate and become our Hero!*

<https://www.ssuiteoffice.com/donate.htm>

Please donate and help support our efforts in providing you with free office software.

Your contributions are vital to the success of our initiative.

<https://www.ssuiteoffice.com/resources/windowswithnojava.htm>

\*\*\*\*\*

Experience the fastest and most secure browser...



*. . . SSuite NetSurfer Browser . . .*

Windows Desktop, Portable, Gaming, and Android Editions Available!

<https://www.ssuiteoffice.com/categories/esotericandspecialist.htm>

\*\*\*\*\*

Try our new Online Apparel and Home Decor Store...

<https://ssuite-office-store.creator-spring.com/?>

Thank you for supporting us!



\*\*\*\*\*

# Try our new Online HTML5 Web Editions...

## Accel Spreadsheet Online Edition



<https://spreadsheet.ssuiteoffice.com/>

## WordGraph Editor Online Edition



<https://word.ssuiteoffice.com/>

\*\*\*\*\*



**The next time you start your system...**



Please be aware that three small applications will run automatically on your next system start-up e.g. "Mac Dock", "Side Clock", and the System monitor app.

If you do not want to use the "Mac Dock for PC", "Side Clock", or System monitor applications, simply delete the shortcuts from the Startup Folder. { go to -- **Start >> All Programs >> Startup** }

Just move them where-ever you want after they've started, they will remember their position the next time you run them again.



Windows 8 / 8.1 / 10 / 11 and beyond! >> Opening the startup folder...

Start the run dialog and enter the following command:

**“shell:startup” OR “shell:common startup”**

Now just add or delete any shortcut to this folder as you like. 🐜

\*\*\*\*\*

Brand New HTML5 Web Apps Released, Forget the Cloud... Go Direct!



Our own custom web search engine - **GROOT** - PWA enabled!

<https://groot.ssuiteoffice.com/>



A word processor for ALL mobile devices... - PWA enabled!

<https://bluevelvet.ssuiteoffice.com/>

Incase you were wondering what a **PWA** is... it's the next software revolution!

*Read more about it on our great Technology Blog:*

<https://blog.ssuiteoffice.com/articles/ssuiteoffice/what-is-a-pwa-and-how-to-install-it-with-google-chrome-browser.htm>

\*\*\*\*\*



## SSuite Office's User Tutorials

Come have a look at all our tutorials to help you get the best out of any SSuite Office application...

<https://www.ssuiteoffice.com/tutorials.htm>

Come help yourself to our free office software:

<https://www.ssuiteoffice.com/freedownloads.htm>

Come have a look at our new free Online Office Suite - PWA enabled:

<https://office.ssuiteoffice.com/>

\*\*\*\*\*



## SSuite Office's Service Packs

Stay up to date and get yourself the latest service packs straight from our website...

<https://www.ssuiteoffice.com/resources/servicepacks.htm>

\*\*\*\*\*



## WordGraph Document Screen Views

To set the correct focus or zoom factor{Page Size} on startup forWordGraph, just go to the main menu and select the following: Tools >> WordGraph Options...

Now simply select the focus or zoom factor you want for WordGraphto display your text in when opening or starting a document.

**F7** and **F8** function keys to zoom in or out...

## Recommended Zoom Factors:

1024 x 768	>>	100%
1366 x 768	>>	130%
1600 x 900	>>	140%
1920 x 1080	>>	150%

\*\*\*\*\*



## Software Help Files

### Please take note about the helpfiles:

The help files will not open in Windows Vista or Windows 7 / 8 / 10 / 11 and beyond. Windows itself displays a message that says it does not support "WinHlp32.exe" anymore.

The Windows Help program (WinHlp32.exe) is no longer included with Windows Vista or Windows 7 / 8 / 10 / 11 and beyond. Users who want to view 32-bit .hlp files must download the program from the **Microsoft Download Center**, and then install it on their computers. All 3rd party software developers are prohibited from distributing this file with their software installation(s).

Below... you will find, are all the download links to the relevant Windows operating systems that needs the "WinHlp32.exe" executable to perform correctly.



**Click below get the latest Help-File for your Windows System:**

<https://www.ssuiteoffice.com/resources/How-To-Run-Helpfiles-On-Windows.htm>

**OR Download Directly From Us...**

<https://www.ssuiteoffice.com/software/mswindowshlp32pack.htm>



To install, just double-click on the downloaded file and Windows will do the rest. The help files will now run normally. There is no need for a restart.

{ WinHlp32.exe - 640 KB in download size }



**The Windows 10 and beyond "WinHlp32.exe" will NOT be released...**

**Microsoft has announced that it will not implement this file for future use in Windows 10 and beyond!**

## Windows 10/11 and beyond...

**Quick Solution without the help of Microsoft or any installations:**

For users who need "winhlp32.exe", just get a copy from a Windows XP system. It is located in **c:\windows**. Then, on Windows 10, boot to the command prompt or login using the built-in "Administrator" account, go to the windows folder, and replace the stub with winhlp32.exe from the XP system.

Problem solved - until you run sfc /scannow. This is yet another annoyance caused by Microsoft not wanting us to have a functional HELP for older programs.

**Download WinXP Helpfile here:**

<https://www.ssuiteoffice.com/downloads/windows/WinXP-winhlp32.zip>

**How to enable the hidden "Administrator" Account in all of the Windows systems:**

**Run the command prompt { Admin } and enter:**

**net user administrator /active:yes**



This will then activate the account. Just log off and re-login with the Administrator account. No password is necessary, just press on the enter button to continue.

To disable the Admin account:

**net user administrator /active:no**

\*\*\*\*\*



## Hybrid Installation and Software Upgrades:

You are now able to upsize your existing installation of SSuite Excalibur to match your screen size for better viewing and user-interaction.

Just download the appropriate Office Suite update zip-file that will fit your screen the best:  
**SSuite Office - 1024 x 600: { Default Size }**

<https://www.ssuiteoffice.com/downloads/servicepacks/SSuiteExcaliburUpdate.zip>

**SSuite Office - 1366 x 768:**

<https://www.ssuiteoffice.com/downloads/servicepacks/SSuiteExLexProUpdate.zip>

**SSuite Office - 1600 x 900:**

<https://www.ssuiteoffice.com/downloads/servicepacks/SSuitePremiumHDUpdate.zip>

**SSuite Office - 1920 x 1080 Full HD -- 4K 8K:**

<https://www.ssuiteoffice.com/downloads/servicepacks/SSuiteOmegaOfficeUpdate.zip>



Unzip, copy, and paste the new application files over the existing ones found in the installation folder of SSuite Excalibur, or just extract the files directly into the installation folder:

x86 Windows - 32bit

C:\Program Files\SSuiteExcaliburOffice

x64 Windows - 64 bit

C:\Program Files (x86)\SSuiteExcaliburOffice

\*\*\*\*\*

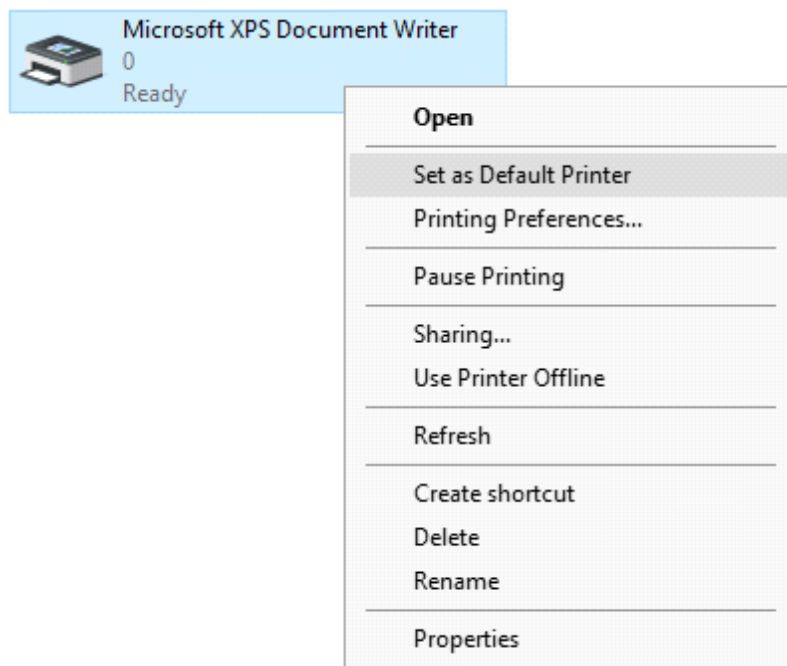
## Windows Printer Environment...

If you are installing this software on a stand-alone computer that does not have a printer connected or does not have a printer driver installed, please simply install or load a generic driver from Windows's list of drivers. You may install any ink jet printer driver from Canon or HP for best results. {e.g. Canon i250/i1500 or HP 690C/710}

If you have a printer, make sure it is connected and switched on, as you may get an error message saying the WordGraph application has stopped working { This is a Windows 10 Error, our application is NOT at fault }.

This only happens if you don't have a printer set as your default printer, the printer is not connected or communicating with your computer!

If you don't want to install a printer driver, simply go to the printer page on the control panel and select the Microsoft XPS Document Writer as the default Printer. As simple as that!






This is needed for creating the best working and enhanced environment for our word processor's print preview features. Thank you.

\*\*\*\*\*


## How to use the new custom spell checker...

To use the custom spell checker successfully, just follow these easy steps...

1. To spell check a whole document, just click on the Custom Spell Checker button. 
2. To spell check a paragraph, just double-click / select the paragraph and click on  button.
3. To spell check a single word, just double-click / select the word or words and click on the  button.

That is it, the whole document, selected paragraph or word, will now appear in the Spell Checker automatically.

Just click on the "Start Checking" button and correct all your spelling mistakes fast... 

When you are finished spell checking, just click on the "Copy to clipboard" button and paste your corrected text back into your document... 

## Accel Spreadsheet:

- Remember to spell check **THEN** format your spreadsheet!



### Document File Formats in SSuite WordGraph Editor:

#### Standard Open / Save Document Formats:

1. Plain Text -- Plain Text ANSI ( \*.txt )
2. XML File Format -- XML File ( \*.xml )
3. C++ File Format -- C++ File ( \*.cpp )
4. SQL File Format -- SQL File ( \*.sql )
5. Pascal File Format -- Pascal File ( \*.pas )
6. C++ Header File Format -- Header File ( \*.h )

7. Rich Text Format -- Rich Text Format ( \*.rtf )
8. Web Page Source File -- Web Page ( \*.htm, \*.html )
9. Rich Text Compressed Format {compresses up to 90%} -- Rich Text Compressed ( \*.rtc )
10. Microsoft Word Document Format -- Word 97-2003 & 6.0/95 - RTF ( \*.doc )

### **MS Office 95 - 2007**

\*\*\*\*\*



### ***Please Take Note:***

There are two different types of **doc** formats available. The first type is the official proprietary **MS Doc** format that is locked and requires a licence from Microsoft. The second **doc** format is the one we use, which is an open generic **doc** format that does not require special software to open...

*hence the name - **Word 97-2003 & 6.0/95 - RTF ( \*.doc )***

### **Digital File Formats in SSuite WordGraph: { Keeping it Green - No More Paper }**

1. Windows Bitmap File Format -- ( \*.bmp )
2. Tagged Information File Format -- ( \*.tiff )
3. Portable Document File Format -- ( \*.pdf )
4. SSuite Presentation File Format -- ( \*.ssp )
5. Graphics Interchange File Format -- ( \*.gif )
6. Windows Enhanced File Format -- ( \*.emf )
7. Joint Photographic Experts Group -- ( \*.jpg )
8. Portable Network Graphic File Format -- ( \*.png )
9. Portable Documents File Format -- Text Only ( \*.pdf )

\*\*\*\*\*



### **Document File Formats in SSuite Accel Spreadsheet:**

### **Spreadsheet File Formats:**

1. Tabbed Text File Format -- Tabbed Text File ( \*.txt )
2. SSuite Accel Format -- SSuite Accel Workbook ( \*.vts )
3. Microsoft Excel 4 File Format -- MS Excel 4 Worksheet ( \*.xls )
4. Microsoft Excel 5 File Format -- MS Excel 5 Workbook ( \*.xls )
5. Tabbed Text File Format -- Tabbed Text File (Values Only) ( \*.txt )
6. Comma Separated File Format-- CSV (Comma Delimited) ( \*.csv )
7. SSuite Basic-Math Spreadsheet -- SSuite Basic-Math Spreadsheet ( \*.bms )

\*\*\* **New Format** \*\*\*

### **Online Office Suite for Desktop and Laptop computers:**

<https://www.ssuiteoffice.com/categories/webapps.htm>

### **Online Office Suite for Mobile / Cell Phones and Tablets / Phablets - PWA:**

<https://office.ssuiteoffice.com/>

All Microsoft Excel documents created in SSuite Accel, are fully compatible with any spreadsheet application that can open and read the Microsoft Excel file format.

When printing in SSuite Accel please see the help file for Header and Footer settings e.g. Page number, Date of worksheet printed etc...

When making your Excel 97-2007 workbooks and spreadsheets compatible with Accel, please read the procedure for this under "File Handling" in SSuite Accel's help file. Microsoft locks all of its documents.

\*\*\*\*\*

### **To add custom applications to the dock for quick startups, do the following:**

Select the blue and green Displays button and then the Applications button as indicated in the image below.



Now click on the add button to search for your application executable to add to the dock list.



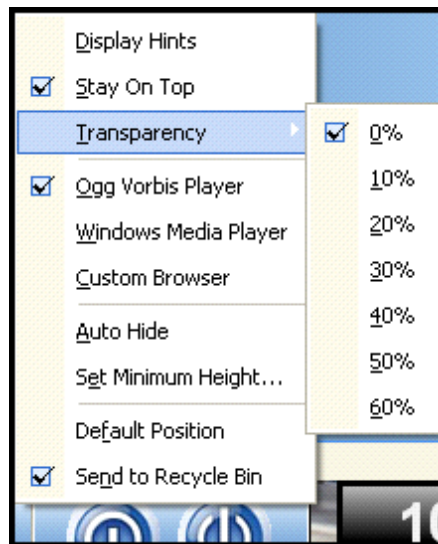
Your application will now be added to the custom dock list. When you are finished adding your favourite applications, simply click on the close button. They will now all be listed in the open button row ready for startup.

The Mac Dock on start-up, takes a very long time to load the application's list on first run...

It unfortunately takes so long because your Anti-Virus software is scanning the application short cuts when loading after Windows start-up. To prevent this enormous time lag and unnecessary scanning, place the Mac Dock on your Anti-Virus software's exception list.

If you have Windows Defender or Security Essentials running, open the application and click on the last tab named "Settings". In the list displayed on the left-hand side, select the process exceptions and add "Desktop.exe" to the list of processes exempt of scanning. This will enable an instant start-up of the Mac dock when loading application short-cut and icons onto the dock.

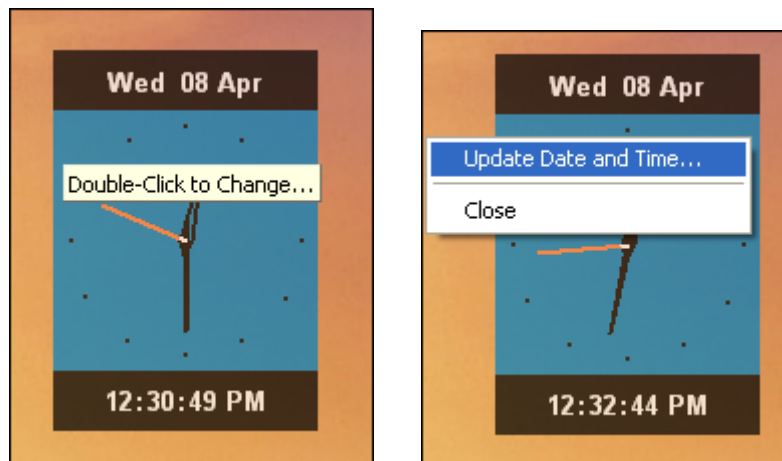
**Please Note** - To change settings on the dock, simply right-click on the dock and make your selection from the pop-up menu. Please see the screenshot below.



Netsurfer, WordGraph, EZMail, Mac Dock, and Accel now have transparency selections for XP, Vista, and Windows 7 / 8 / 10 / 11 and beyond.. ( right-click on the dock for settings ).

To use the windows media player instead of ours, just select the 'Windows Media Player' option. If you have a different web browser installed and want it to be your default web browser on the dock, just select the 'Custom Browser' option.{supports only IE and FireFox}

### Clock Changes and Functions:



\*\*\*\*\*

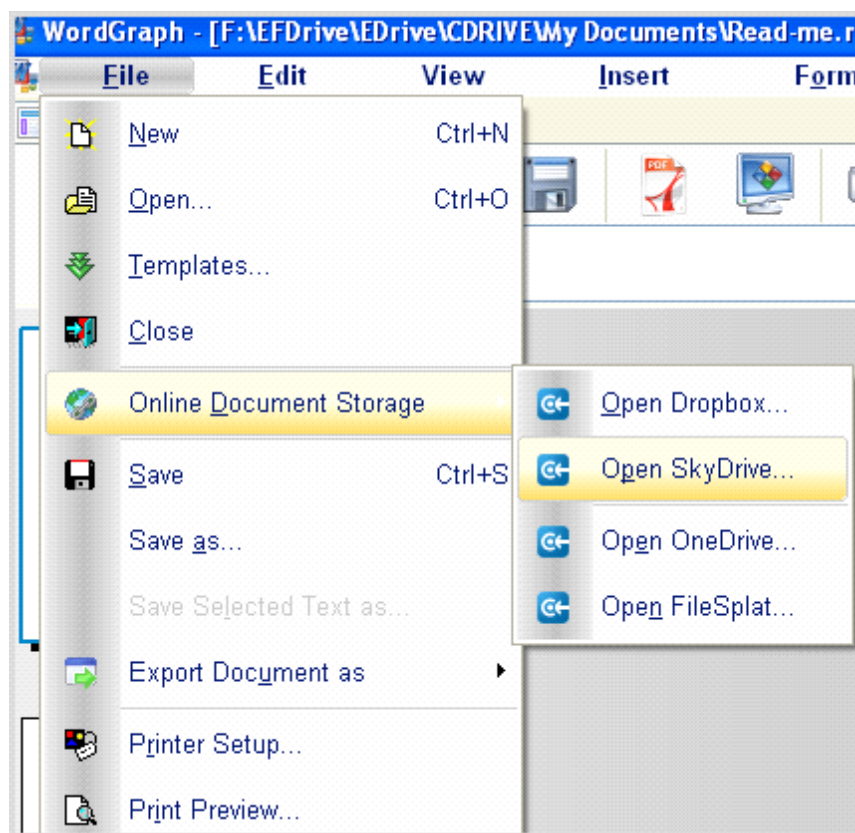


## New Changes made:

### Application Updates:

Netsurfer, WordGraph, EZMail, Mac Dock, and Accel now have transparency selections for XP, Vista, and Windows 7 / 8 / 10 / 11 and beyond...( right-click on the dock for settings ).

Access the cloud directly from within our applications. Dropbox, SkyDrive, and OneDrive is fully supported. Just open the window, login, and access all your online documents.



Now you can create presentations in WordGraph without any effort, just export your work as a "SSuite Presentation" file - \*.ssp

Convert all those incompatible and unsupported MS Word and ODF files to RTF with an Online Document converter, directly inside WordGraph.

"SSuite Presentation" files can be viewed in the EZPhoto Album viewer or any current web browser. Just open the \*.ssp file under "All Files \*.\*" in the Open File dialog box.

The "Recent Documents" application has a new "File Portal" feature for easier file transfer



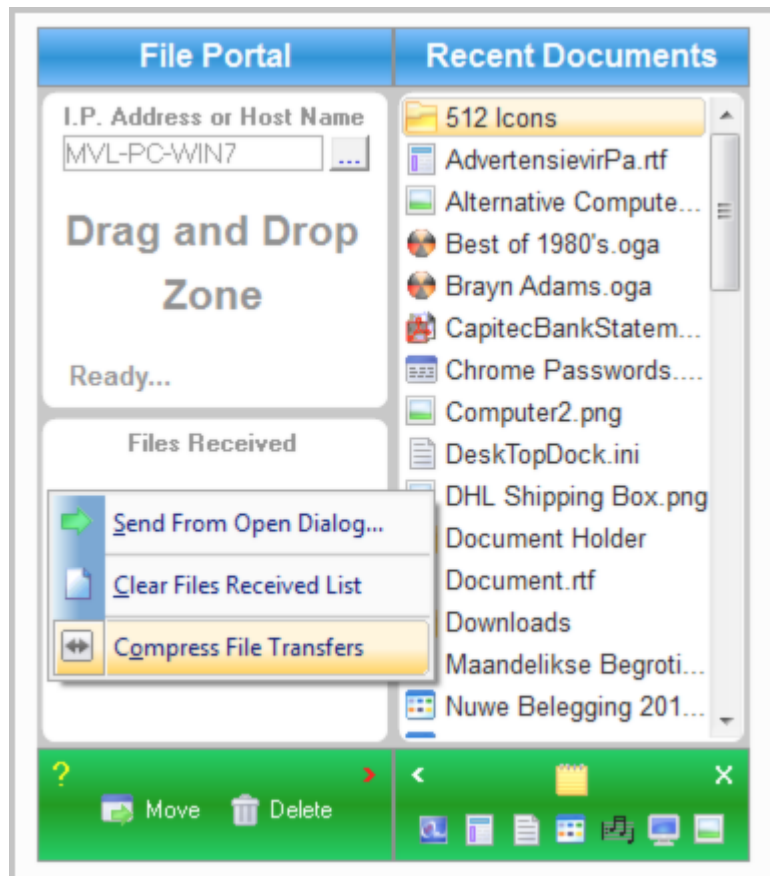
over networks. Simply drag and drop any file or document onto the zone, and it will be transported immediately to the destination I.P. address or PC host name -(the recipient must also be running the same application). ***Please also remember to enable file extensions in Windows Explorer to use the recent document's list successfully.***

You may drop and drag a file, document from the desktop, or the recent documents list, or send the same received file back to where it came from, by simply dragging it onto the drop zone. It is just that simple to use. Double click to use the Open Dialog window for multiple transfers.



We now have file compression for faster data transfers...

...just right-click and select the option on the shortcut menu as seen below...



Hi-Tech Communications and Data transfer made simple...

\*\*\*\*\*

***Get the best out of our software and your computer...***

<https://www.ssuiteoffice.com/tutorials.htm>

\*\*\*\*\*



**Updates Made to the Graphical Software:**

EZPhoto Editor - New interface cursors for better viewing and also enhanced importing and exporting of image formats. New Print Preview added. New toolbar, colour bar added.

Exporting images to JPG now allows for progressive image encoding.

#### Import / Open:

Portable Network Graphic - \*.png with transparency  
Graphics Interchange Format - \*.gif with transparency  
Graphics Interchange Format Animated - \*.gif { Multi-Frame Compatible }  
Joint Photographic Experts Group - \*.jpg ; \*.jpeg  
Windows Bitmap - \*.bmp  
Windows Metafile - \*.wmf  
Windows Enhanced Metafile - \*.emf

#### Export / Save:

Portable Network Graphic - \*.png with transparency  
Graphics Interchange Format - \*.gif with transparency  
Joint Photographic Experts Group - \*.jpg  
Tagged Information File Format 6.0 - \*.tiff  
Windows Bitmap - \*.bmp  
Windows Enhanced Metafile - \*.emf

\*\*\*\*\*

If you find this office suite in any way helpful and productive, please help support our efforts by making a donation or contribution...

<https://www.ssuiteoffice.com/donate.htm>

Your contributions are vital to the success of our initiative...

<https://www.ssuiteoffice.com/resources/windowswithnojava.htm>

\*\*\*\*\*



**More About Us...**

<https://www.ssuiteoffice.com/aboutus.htm>



**Contact Details:**



Web address : [www.ssuiteoffice.com](http://www.ssuiteoffice.com)  
Tutorials : [www.ssuiteoffice.com/tutorials.htm](http://www.ssuiteoffice.com/tutorials.htm)  
General Queries : [www.ssuiteoffice.com/resources/helpdesk.htm](http://www.ssuiteoffice.com/resources/helpdesk.htm)  
Free Service Packs : [www.ssuiteoffice.com/resources/servicepacks.htm](http://www.ssuiteoffice.com/resources/servicepacks.htm)  
Free Software Downloads : [www.ssuiteoffice.com/freedownloads.htm](http://www.ssuiteoffice.com/freedownloads.htm)



**SSuite Office Excalibur Release**



**Stay Compatible - Stay Productive - Stay Connected**



**SSuite Office Software**

Pure Visual Simplicity™



# Go Green With Us:

<https://www.ssuiteoffice.com/aboutus.htm#318490165>



**Does not contain any spyware, malware, viruses, or any other third-party software!**

## **Installation Instructions for all our free office suites and applications:**

- Before running any software applications, please read the "Read Me" document first!

Open Source Software Sucks Eggs Big Time!!!



Good Bye... So Long... and thank you for all the fish!